


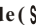


**Table Of Contents**

Safety Notes	04
Overall Introduction	05
Accessories	05
External View	06
Mode Dial (Working Mode)	07
Focus Range	07
Icon Display	08
Icon Index Table	09
Getting Ready	10
Switch On or Off the Camera	10
Loading the Batteries	10
Using an AC Adapter	11
Inserting an SD Card	11
Removing an SD Card	12
Attaching the Wrist Strap	12
Getting Started	13
Basic Photography	13
Advanced Functionality Settings	14
Under Shooting Mode ()	14
Setting Focus Range	14
Turning On or Off the TFT LCD Monitor	14
Setting Flash Mode	14
Setting Self-timer	15
Setting Digital Zoom	16
Setting an Image Size (Resolution)	16
Setting Image Quality	17
Setting Voice Memo	18
Setting Exposure	19
Setting White Balance	20
Under Playback Mode ()	21
Exploring an Image	21
Displaying Image Information	22
Playback of a Movie Clip	22
Thumbnail Images (Small Images) Display	23
Deleting Images	24
Formatting an SD Card	24

**Table Of Contents**

Formatting the Built-in Flash Memory	25
Setting Slide Show	25
Setting Image Protection	26
Printing Out Images without a PC	27
Under Movie Clip Mode ()	28
Setting the Recording Time of a Movie Clip	28
Under Setup Mode ()	29
Setting Beep Sound	29
Setting Auto Power Off	29
Setting Date Stamp	30
Setting Date Type	30
Setting Date	31
Setting Quick View	31
Setting Language	32
Default Setting	32
PC Connection	33
Installing the Camera's Driver	33
Under Microsoft Windows 98 / 98SE	33
Under Microsoft Windows 2000	35
Under Microsoft Windows ME / XP	37
Under Mac 9.X or later	37
Installing Ulead Photo Explorer	38
Under Windows Operation System (Windows 98/98SE/2000/ME/XP)	38
Under Macintosh Operating System (Mac 9.X or later)	42
About Ulead Photo Explorer	44
Downloading the Image(s)	52
Under Windows Operation System (Windows 98/98SE/2000/ME/XP)	52
Downloading Images from Removable Disk	52
Downloading Images through Ulead Photo Explorer	52
Under Macintosh Operating System (Mac 9.X or later)	53
Downloading Images from Removable Disk	53
Downloading Images through Ulead Photo Explorer	53
Appendix	54
Error Message Table	54
Specifications	54

Safety Notes

- Do not try to open the camera by yourself which may cause damage to the camera or electric shock.
- Do not fire the flash in a close distance (less than 1 meter) to human eyes.
- Keep the camera away from the reach of children or animals to prevent them from swallowing the batteries or small accessories.
- Avoid using the camera if any form of liquid enters the camera. If it happens, switch off the camera and contact the company that you bought this camera from for help.
- Do not operate this camera with wet hands which may cause electric shock.
- Do not place or store the camera in a high temperature environment which may cause damage to the camera.
- Do not mix to use different types of batteries or new and old batteries.
- Take out the batteries to avoid electricity leakage which may damage the camera when the camera is not in use for a long period.
- Unplug the camera from the adapter (if used) to avoid damage to the camera if the camera is not to be used in a long period.
- It's normal that the temperature of the camera body rises after using for a long period.

Overall Introduction

Accessories

Digital Camera

Camera Driver
& Ulead Software

2 x AA Batteries



Camera Pouch



User Manual



Quick Start Guide



USB Cable



Wrist Strap



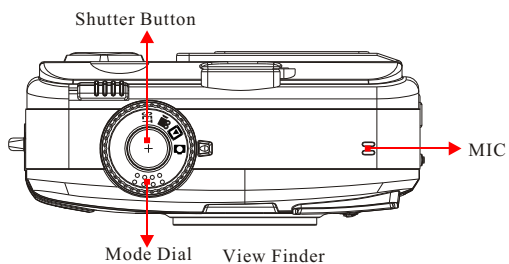
SD Card (Optional)



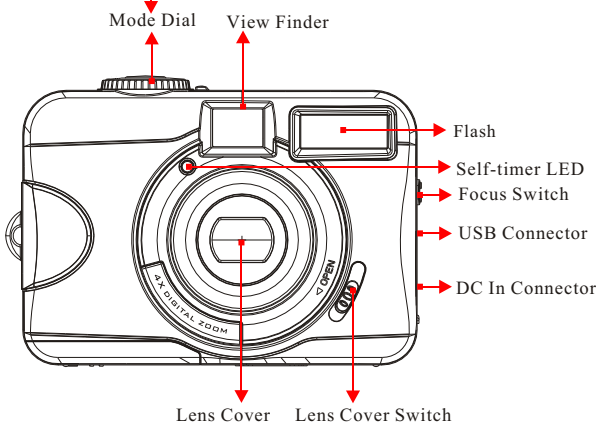
Overall Introduction

External View

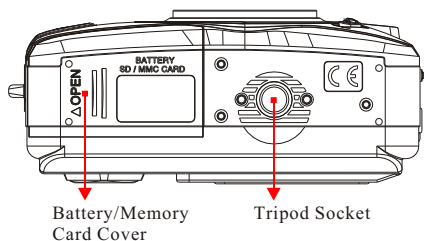
Top



Front

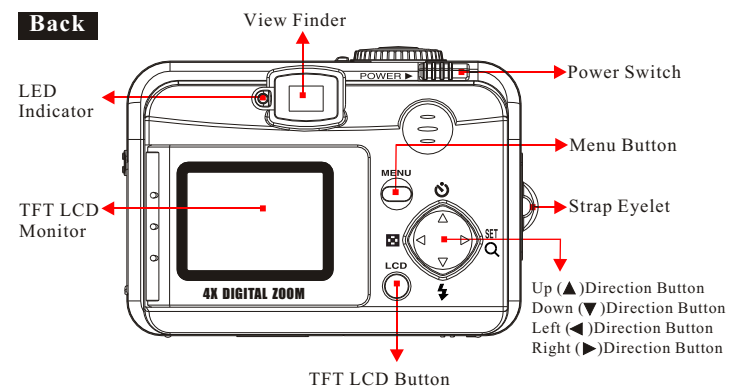


Bottom

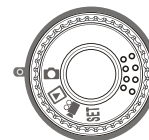


Overall Introduction

Back



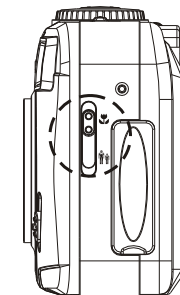
Mode Dial (Working Mode)



- ▶ Shooting Mode (📷)
- ▶ Playback Mode (📺)
- ▶ Movie Clip Mode (📹)
- ▶ Setup Mode (SET)

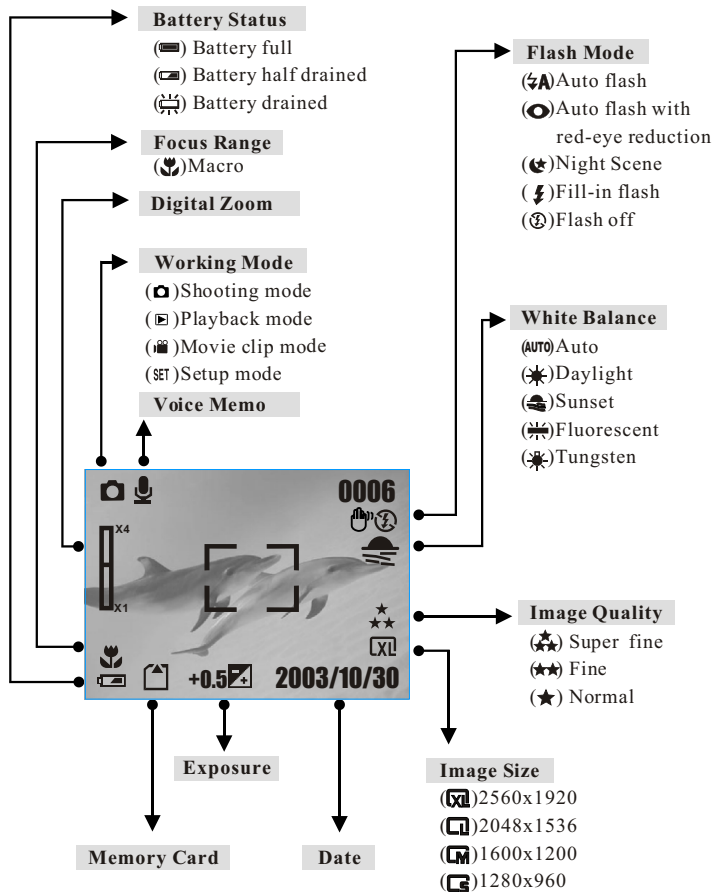
Focus Range

- ▶ Macro (🌸) : 0.2m
- ▶ Normal (👤) : 0.8m~infinity



Overall Introduction

Icon Display



Overall Introduction

Icon Index Table

Working Mode				SET	
Focus Range					
Flash Modes					
Digital Zoom					
Thumbnails					
Self-timer					
Movie Clip					
Memory Card Inside					
Battery Status					
Image Size (Resolution)					
Image Quality					
White Balance	AUTO				
Exposure					
Voice Memo					
Protected Image					
Print (DPOF)					
Darkness Warning					

Getting Ready

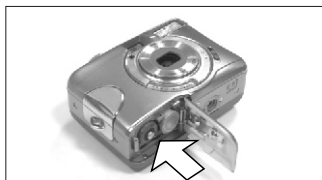
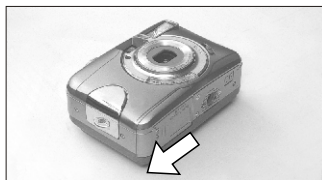
Switch On or Off the Camera

Slide the "POWER" switch sideways and hold it awhile to switch on the camera. Repeat the action above to switch off the camera.



Loading the Batteries


1. Check if the camera is switched off.
2. Slide the Battery / Memory Card Cover out to open it.
3. Load 2x AA batteries into the battery chamber, following the polarity indications.
4. Close the Battery / Memory Card Cover.




Note

The below symbols are the indication of the battery status on the TFT LCD Monitor.

(): Battery power is full.

(): Battery power is half drained. Have new batteries ready.

(): Battery power is drained. Replace the batteries you are using now.

Note

Please refer to the suggested battery shown below to ensure the normal operation of the camera.

Brand	Type
Duracell(Ultra)	Alkaline

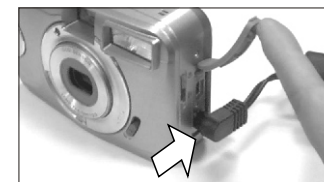
Getting Ready

Note

- Batteries may lose power if kept inside the camera for a long time without using. Please remove the batteries while the camera is not in use.
- Do not use manganese batteries since they cannot supply sufficient power to support the camera's operation.
- Batteries may not work normally under 0°C.
- It's normal that the temperature of the camera body goes up after being in use for a long period.
- Long time use is suggested to use an AC adapter.
- In order to avoid any damage caused by bad quality AC adapters, please contact the original company, selling you the camera.

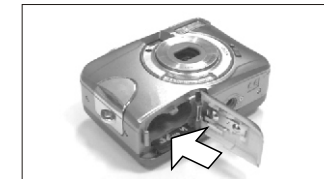
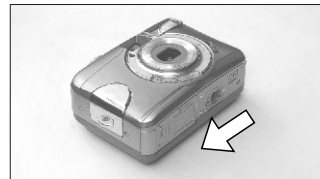
Using an AC Adapter

1. Check if the camera is switched off.
2. Make sure the AC adapter is 3.3V/2.0A.
3. Connect the AC adapter connector with the DC In socket on the camera.
4. Connect the adapter itself with the power outlet
5. Switch on the camera.



Inserting an SD Card

1. Switch off the camera.
2. Open the Battery / Memory Card Cover.
3. Insert the SD card into the card slot and press it down until a click sound happens
4. Close the Battery / Memory Card Cover.



Getting Ready

Note

If a new SD card is used, you are required to format it first. Please refer to page 24 for details.

Note

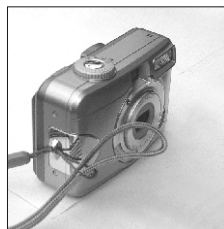
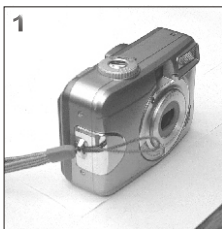
With a built-in flash memory, the image(s) can be stored either in it or in memory card. Only if the memory card is inserted, the images will be stored in the memory card rather than the built-in flash memory. On the other hand, the images will be stored in the built-in flash memory only if a memory card is not inserted.

Removing an SD Card

1. Check if the camera is switched off.
2. Open the Battery / Memory Card Cover.
3. Press down the SD card and the card will jump up.
4. Close the Battery / Memory Card Cover.



Attaching the Wrist Strap



12

Getting Started

Basic Photography

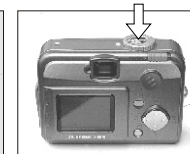
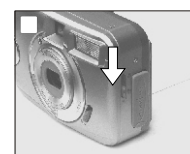
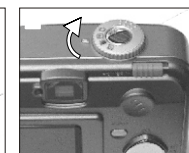
1. Open the lens cover.
2. Switch on the power.
3. Set the Mode Dial at Shooting Mode (📷) for still image or Movie Clip Mode (🎥) for video recording.
4. The setting of the focus range for still image capture is required as follows
 - ▶ Macro (🌸) : 0.2m
 - ▶ Normal (👤) : 0.8m~infinity
5. Refer to the next section-- Advanced Functionality Settings (page 14) to set up the features you prefer.
6. Hold still and press down the Shutter Button.
7. The LED Indicator starts blinking right after the Shutter Button is released.
8. Once the LED Indicator stops blinking, you are ready to take another shot.

Note

A message of "LENS COVER" blinking on the TFT LCD Monitor as a warning is to remind you of opening the lens cover first.

Note

A message of "Low Light!" appearing on the TFT LCD Monitor as a warning is to remind you that the image that you are going to capture is under a low light environment. To compose a good quality image, it is strongly recommended to go to the Flash Mode to select Auto Flash or Fill-in Flash to supply more light sources.



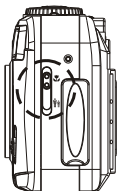
13

Advanced Functionality Settings

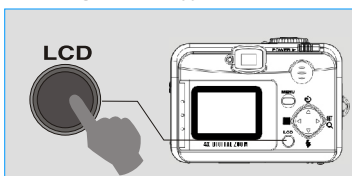
Under Shooting Mode (📷)

Setting Focus Range

- ▶ Macro (🌸) : 0.2m
- ▶ Normal (👤) : 0.8m~infinity

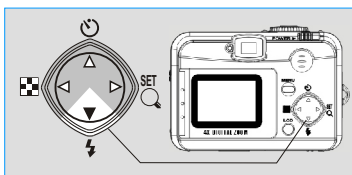


Turning On or Off the TFT LCD Monitor (Preset: On)



▶ You can change the icon display on the TFT LCD Monitor, turn it off, and turn it on again by pressing the LCD button in order.

Setting Flash Mode (Preset: Auto Flash)

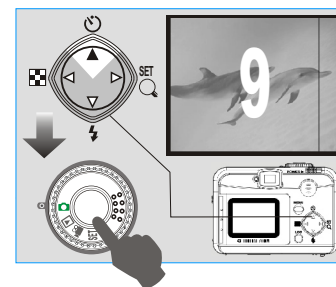


▶ You can change the flash mode shown below according to the environment.

📷	Auto Flash	The flash fires automatically as required under shooting mode.
👁	Auto Flash with Red-eye Reduction	To avoid the subject's eyes appearing in the picture, use this mode can effectively minimize the likelihood of the red-eye effect.
🌃	Night Scene	The flash will flash and the exposure time is set to 1/4 second so that the subject in the foreground and the background are properly exposed.
⚡	Fill-in Flash	The mode will enable the flash to fire in any circumstances.
🚫	Flash Off	The mode will disable the flash to fire in any circumstances.

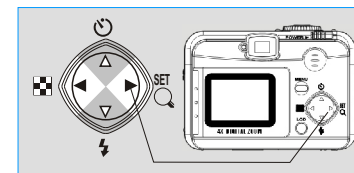
Advanced Functionality Settings

Setting Self-timer (Preset: Off)



- ▶ The self-timer starts with the countdown for 10 seconds.
- ▶ The self-timer will be automatically cancelled once the shoot is done.

Setting Digital Zoom (4X continuously)



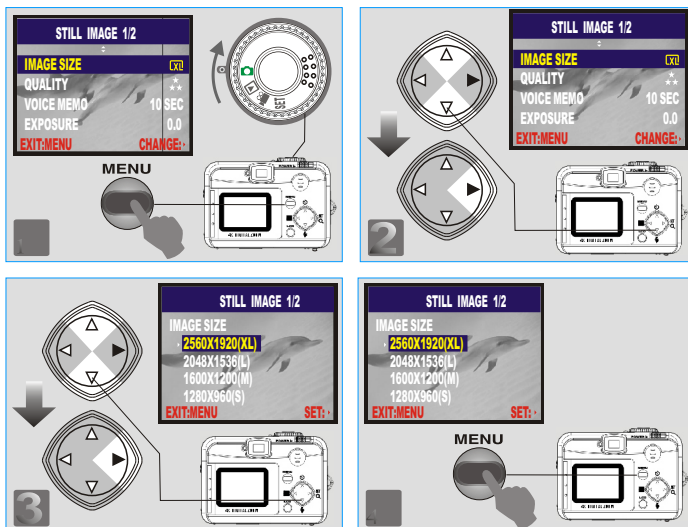
- ▶ The zoom bar, appearing on the left on the TFT LCD monitor, shows the current digital zoom position.

Note

Generally speaking, the digital-zoom image quality, compared with non-digital-zoom, always decreases sharpness.

Advanced Functionality Settings

Setting Image Size (Preset: 2048 x 1536)



Step 1: To enter the setting mode Step 2: To select and enter the option
Step 3: To select and confirm the option Step 4: To escape the setting

Note

Four resolutions provided can be selected as follows:

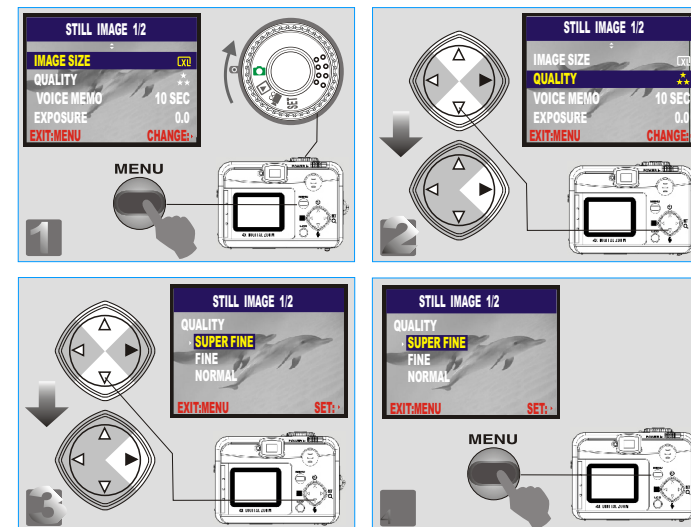
- (XL) 2560 x 1920 (XL)
- (L) 2048 x 1536 (L)
- (M) 1600 x 1200 (M)
- (S) 1280 x 960 (S)

Note

You can easily check whether the setting is changed or not by the resolution icon display on the right side of the LCD screen. If not, please repeat the above steps.

Advanced Functionality Settings

Setting Image Quality (Preset: Fine Quality)



Step 1: To enter the setting mode Step 2: To select and enter the option
Step 3: To select and confirm the option Step 4: To escape the setting

Note

Three levels of image quality can be selected as follows:

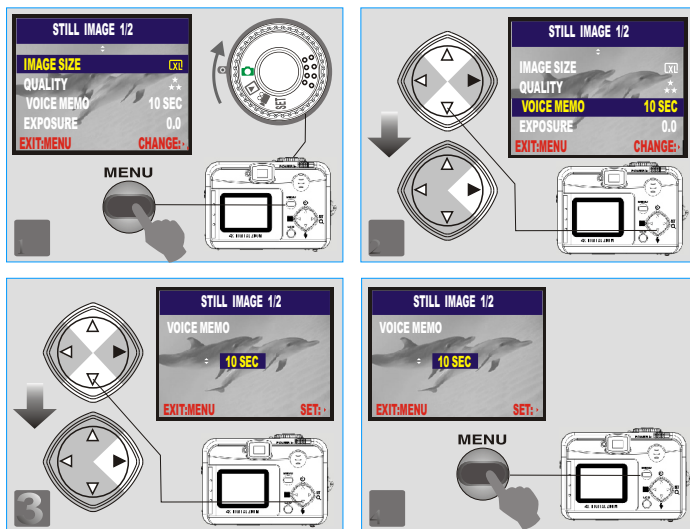
- (★★) Super Fine
- (★) Fine
- (★) Normal

Note

The better the image quality is set, the less the number of images can be stored in the built-in flash memory or the memory card.

Advanced Functionality Settings

Setting Voice Memo (Preset: 10 SEC)



Step 1: To enter the setting mode
Step 2: To select and confirm the option

Step 3: To select and enter the option
Step 4: To escape the setting

Note

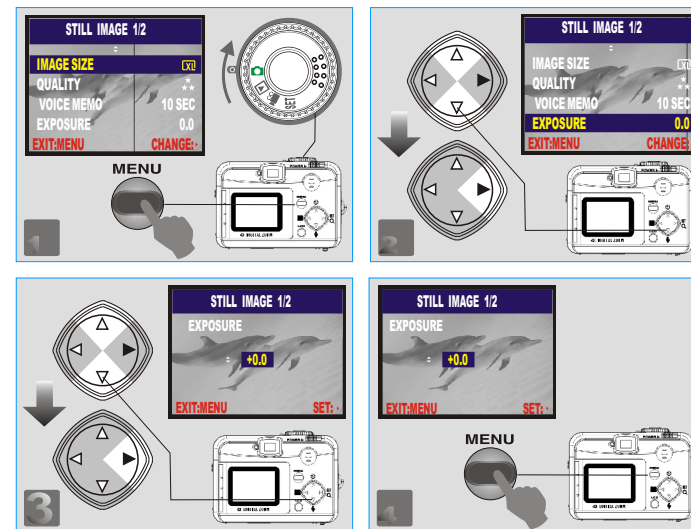
With the Voice Memo, you can view the icon (🗣️) on the TFTLCD Monitor.

Note

With the Voice Memo, the audio is stored in WAV file format. So you can download both of the image in JPG and the Voice Memo in WAV on PC.

Advanced Functionality Settings

Setting Exposure (Preset: ±0)



Step 1: To enter the setting mode
Step 2: To select and confirm the option

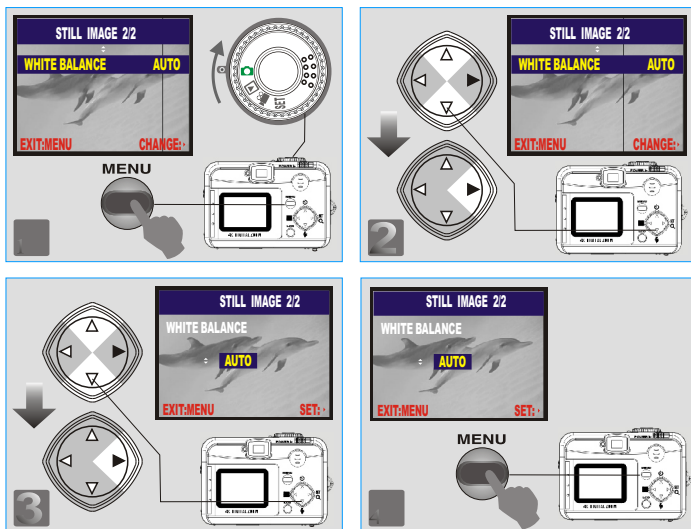
Step 3: To select and enter the option
Step 4: To escape the setting

Note

The higher the value is, the brighter the image will be.

Advanced Functionality Settings

Setting White Balance (Preset: Auto)



Step 1: To enter the setting mode

Step 2: To select and confirm the option

Step 3: To select and enter the option

Step 4: To escape the setting

Note

Five White Balance modes can be selected as follows:

AUTO	Auto	Adjusting the white balance automatically
	Daylight	Under strong light environment
	Sunset	Under sunset light environment
	Fluorescent	Under fluorescent light environment
	Tungsten	Under tungsten light environment

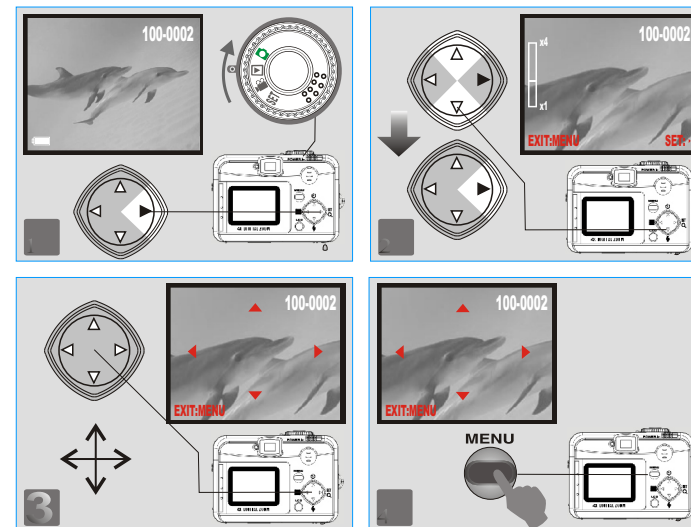
Note

It is suggested to stay AUTO mode for beginners.

Advanced Functionality Settings

Under Playback Mode (Image)

Exploring an Image



Step 1: To enter the setting mode

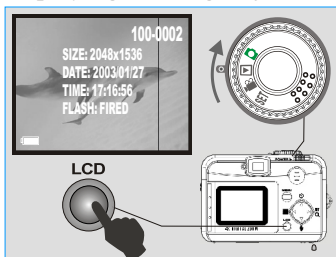
Step 2: To explore the image

Step 3: To zoom in/out and enter the option

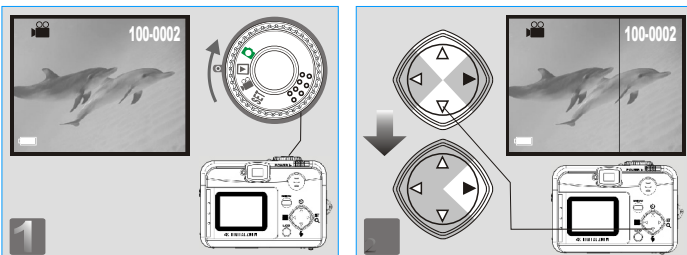
Step 4: To escape the setting

Advanced Functionality Settings

Displaying an Image Information



Playback of a Movie Clip



Note

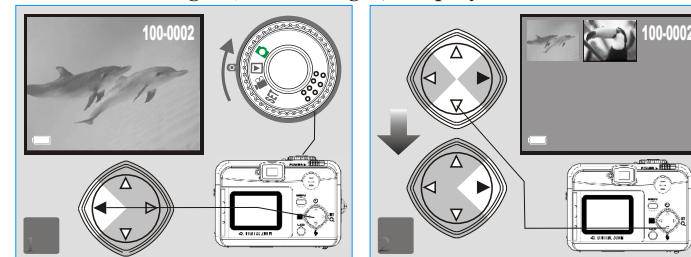
Press Up (▲) and Down (▼) Direction Button to search for the movie clip you record and press Right (▶) Direction Button to see the movie clip.

Note

You can press Right (▶) Direction Button to pause the playback and repress to cancel it.

Advanced Functionality Settings

Thumbnail Images (Small Images) Display



Note

Press Up (▲) and Down (▼) Direction Button to search for the images or movie clips and press Right (▶) Direction Button to see the movie clip.

Note

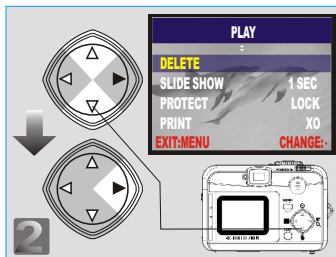
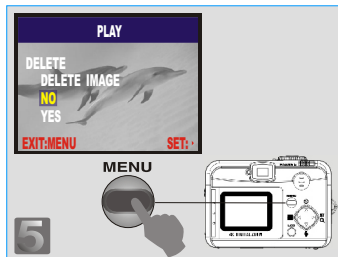
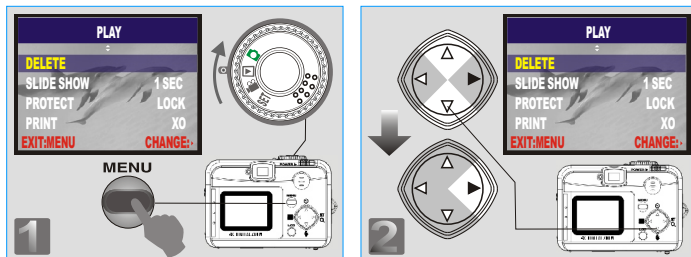
The appearance of icon of (🎥) represents a movie clip, not a still image.

Note

The appearance of icon of (🗣️) represents a still image with voice memo.

Advanced Functionality Settings

Deleting Image(s)



Step 1 : To enter the setting mode

Step 2 : To select and enter the option

Step 3 : To select and enter the option

Step 4 : To select and confirm the option

Step 5 : To escape the setting

Formatting an SD Card

Please insert an SD Card in advance.

Follow the above steps, selecting "FORMAT" in step 3, "YES" in step 4.

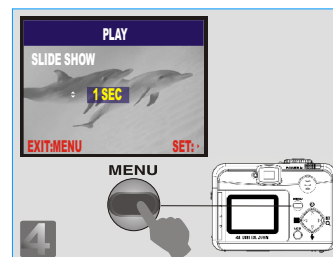
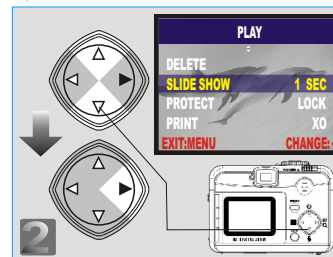
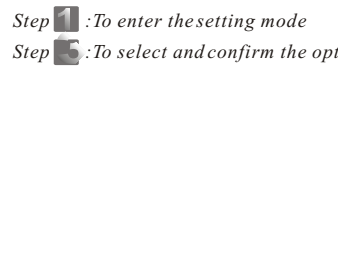
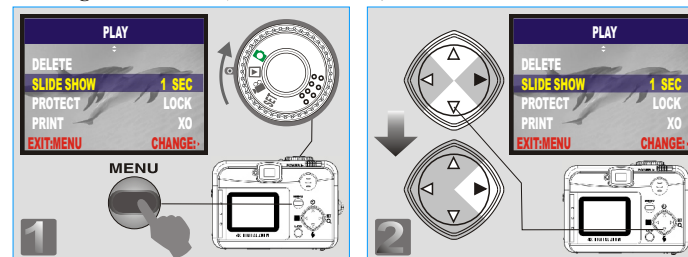
Advanced Functionality Settings

Formatting the Built-in Flash Memory

Please make sure no memory card is inserted.

Refer to page 24 and follow the steps, selecting "FORMAT" in step 3, "YES" in step 4.

Setting Slide Show (Preset: 1 SEC)



Step 1 : To enter the setting mode

Step 2 : To select and enter the option

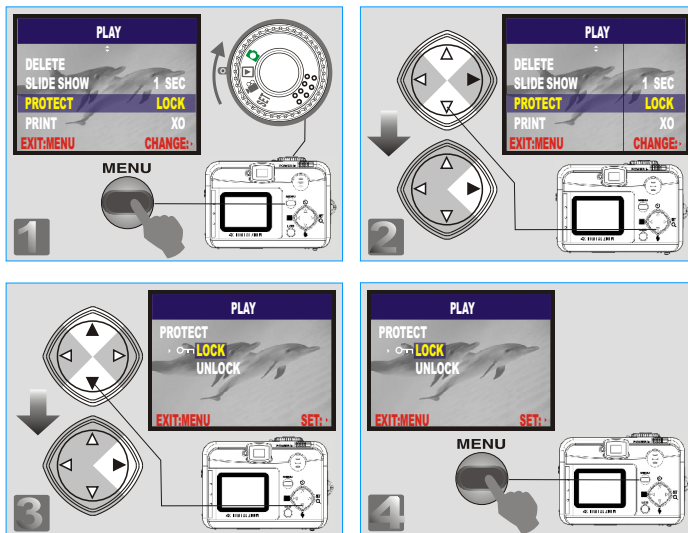
Step 3 : To select and confirm the option

Step 4 : To select and confirm the option

Step 5 : To escape the setting

Advanced Functionality Settings

Setting Image Protection



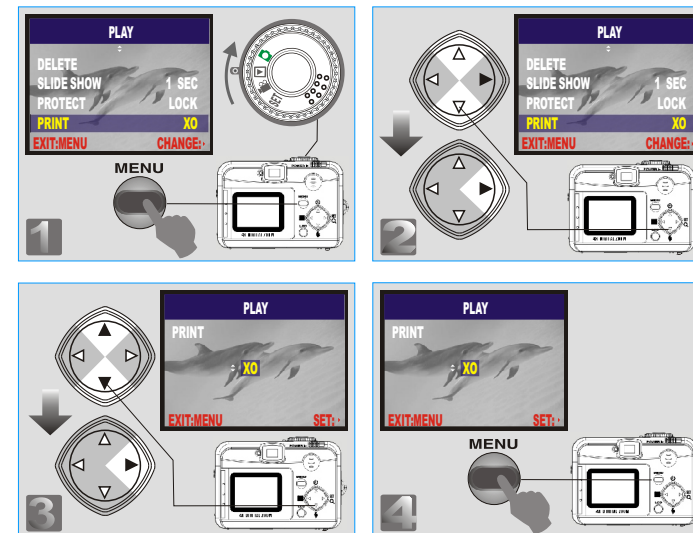
Step 1 : To enter the setting mode Step 2 : To select and enter the option
 Step 3 : To select and confirm the option Step 4 : To escape the setting

Note

After the above steps are done, please check if the (🔒) is shown on the right side of the TFT LCD screen. If it is not shown please repeat the above steps. For cancelling this "PROTECT" function, please repeat the steps above and select "UNLOCK" in the step 3 instead.

Advanced Functionality Settings

Printing Out Images without a PC (Preset: X0)



Step 1 : To enter the setting mode Step 2 : To select and enter the option
 Step 3 : To select and confirm the option Step 4 : To escape the setting

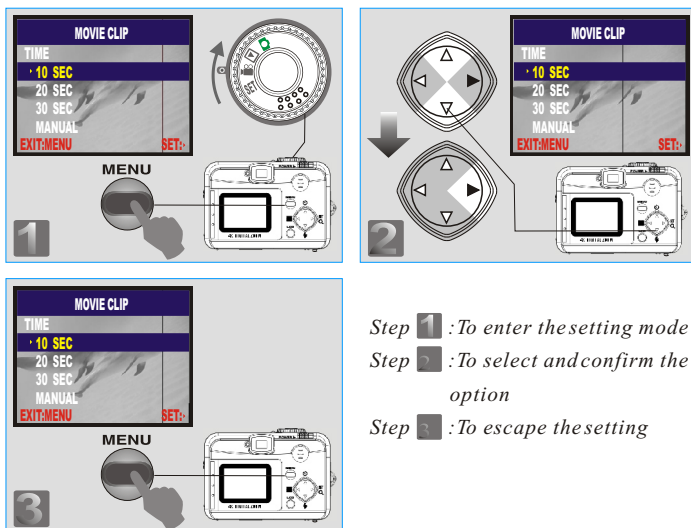
Note

After the above steps are done, please check if the (🖨️) is shown on the left down corner. If it is not shown, please repeat the steps. You cannot see the "PRINT" function on the TFT LCD Monitor if a memory card is not inserted.

Advanced Functionality Settings

Under Movie Clip Mode (📷) (Preset : 10 SEC)

Setting the Recording Time of a Movie Clip



Note

- Once the Shutter Button is pressed, the camera will start and end the recording automatically according to the time you select.
- If "Manual" is selected, press the Shutter Button to start the recording or press the Shutter Button again to stop the recording.

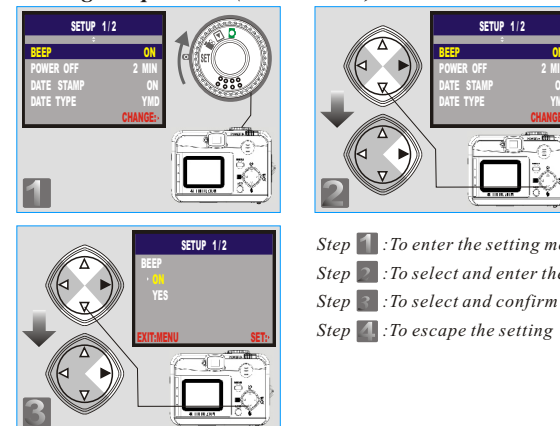
Note

The TFTLCD Monitor will show "Low Light!" as a warning to remind you that the video that you are going to record is in a low light environment.

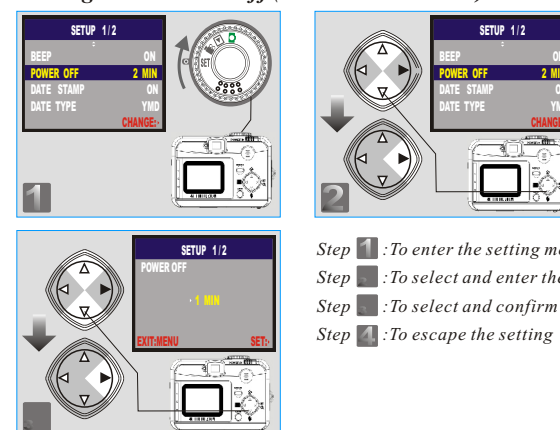
Advanced Functionality Settings

Under Setup Mode (SET)

Setting Beep Sound (Preset : On)

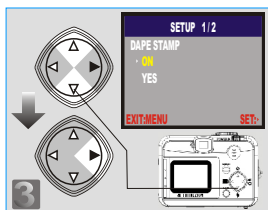
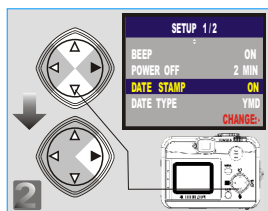
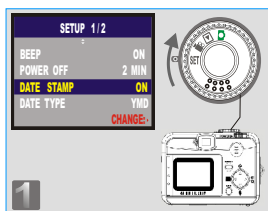


Setting Auto Power Off (Preset : 2 Minutes)



Advanced Functionality Settings

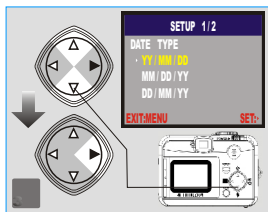
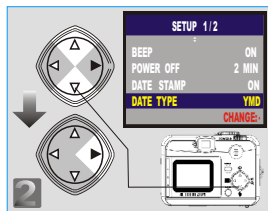
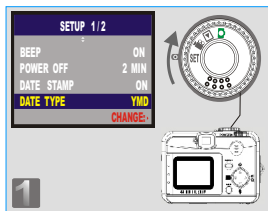
Setting Date Stamp (Preset : On)



- Step 1: To enter the setting mode
- Step 2: To select and enter the option
- Step 3: To select and confirm the option
- Step 4: To escape the setting

Note
If "ON", the date in this image can be printed out.

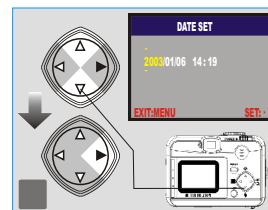
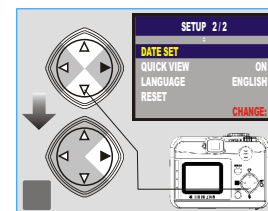
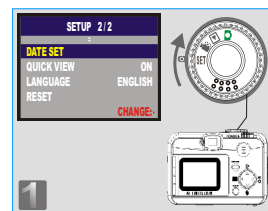
Setting Date Type



- Step 1: To enter the setting mode
- Step 2: To select and enter the option
- Step 3: To select and confirm the option
- Step 4: To escape the setting

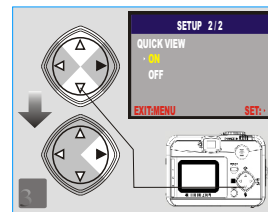
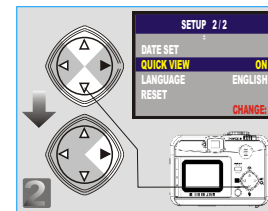
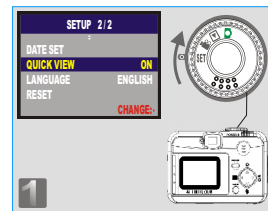
Advanced Functionality Settings

Setting Date



- Step 1: To enter the setting mode
- Step 2: To select and enter the option
- Step 3: To set up the date
- Step 4: To escape the setting

Setting Quick View

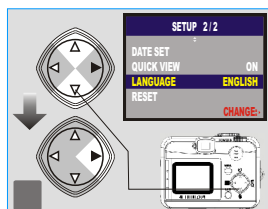
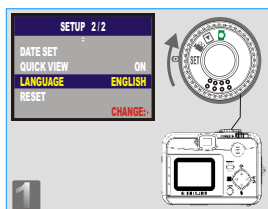


- Step 1: To enter the setting mode
- Step 2: To select and enter the option
- Step 3: To select and confirm the option
- Step 4: To escape the setting

Note
This can allow you to view the image immediately after you take a picture.

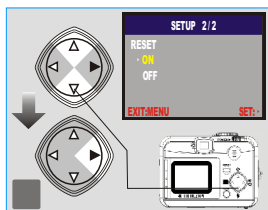
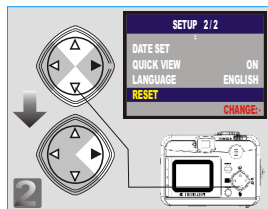
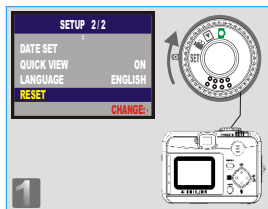
Advanced Functionality Settings

Setting Language



- Step 1: To enter the setting mode
 Step 2: To select and enter the option
 Step 3: To select and confirm the option
 Step 4: To escape the setting

Default Setting



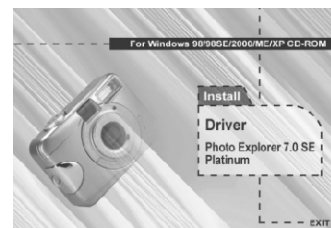
- Step 1: To enter the setting mode
 Step 2: To select and enter the option
 Step 3: To select and confirm the option
 Step 4: To escape the setting

PC Connection

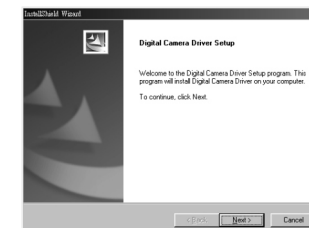
Installing the Camera's Driver

Under Microsoft Windows 98 / 98SE

Step 1:
 Insert the CD into the CD-ROM Drive. With the auto run program in this CD, click "Driver" to start with the installation.



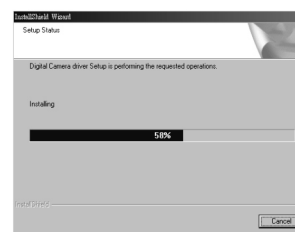
Step 2:
 A welcome window appears and please click "Next" to the next step.



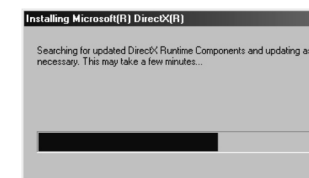
Note

If the auto run program fails under certain situation, please go to the Start Menu, click "Run" and key in "CD-ROM Drive:\ AutoRun.exe" and then click "OK" Button.

Step 3:
 The computer starts with the installation.



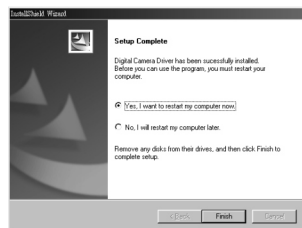
Step 4:
 The computer starts with the installation of DirectX8.1 if necessary.



PC Connection

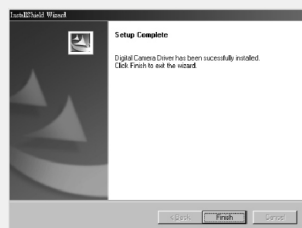
Step 5 :

Please select "Yes" and click "Finish" to restart the computer.



Note:

If the computer has DirectX 8.0 or later already, the installation procedure will skip above step 4 and go to the following window directly completing the driver installation.

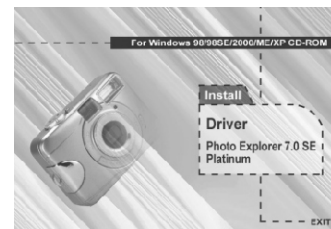


PC Connection

» Under Microsoft Windows 2000

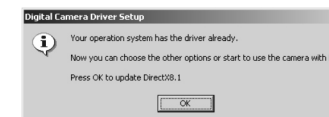
Step 1 :

Insert the CD into the CD-ROM Drive. With the autorun program in this CD, click "Driver" to start with the installation.



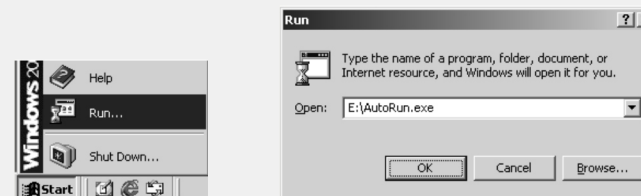
Step 2 :

Click "OK" to proceed the installation of DirectX8.1.



Note:

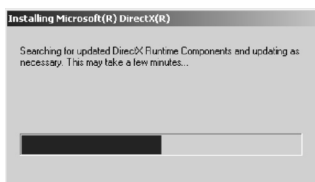
If the auto run program fails under certain situation, please go to the Start Menu, click "Run" and key in "CD-ROM Drive:\ AutoRun.exe" and then click "OK" Button.



PC Connection

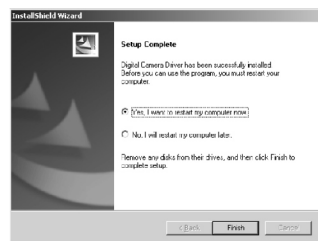
Step 3 :

The computer starts with the installation of DirectX8.1 if necessary.



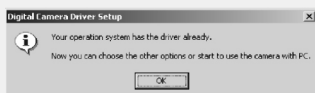
Step 4 :

Please select "Yes" and click "Finish" to restart the computer.



Note:

Having DirectX 8.0 or later already, the computer will skip the installation procedure from step 2 above and go to the following window directly. Please complete the driver installation with a "OK" Click.



PC Connection

Under Microsoft Windows ME/XP

The camera's driver is not required under Windows ME and Windows XP. So, go to page 38 for installation of Ulead Photo Explorer or go to page 52 to download the stored image(s) onto the PC. Please click "OK", if the below window prompts.



Under Mac 9.X or later

This camera, supporting only Mac 9.X or later versions, allows you not to install any driver. Please go to page 42 for installation of Ulead Photo Explorer or go to page 53 to download the stored images onto the PC.

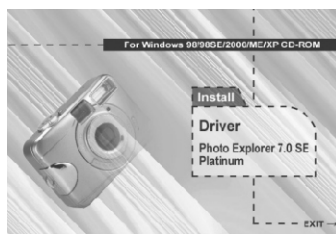
PC Connection

Installing Ulead Photo Explorer

Under Windows Operating System (Windows 98/98SE/2000/ME/XP)

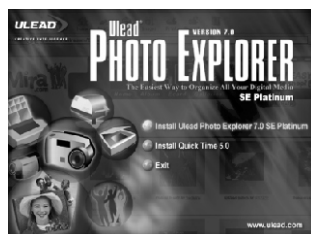
Step 1:

Insert the CD into the CD-ROM Drive. Click "Photo Explorer 7.0 SE Platinum".



Step 2:

Click "Install Ulead Photo Explorer 7.0 SE Platinum".



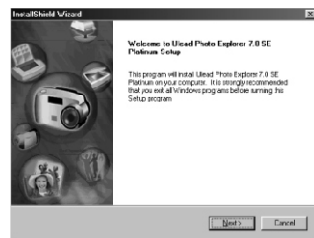
Step 3:

Choose operating language. 9 languages offered can be selected, which are Simplified Chinese, Traditional Chinese, English, French, German, Italian, Japanese, Korean, and Spanish.



Step 4:

As a welcome window appears, please click "Next" to go to next step.



PC Connection

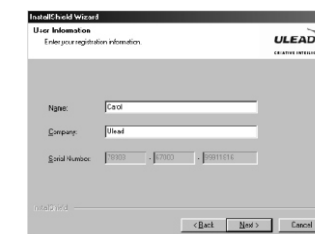
Step 5:

Please read the content of the agreement first and click "Yes" to go the next step.



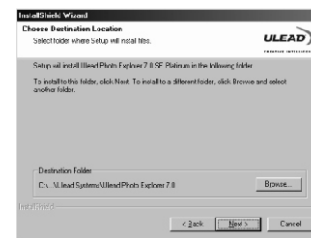
Step 6:

Please enter your name and your company's name, clicking "Next".



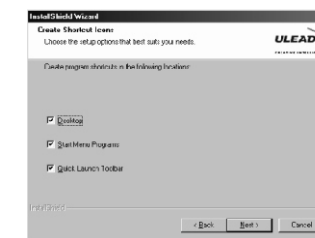
Step 7:

This software will be installed at "Disk C:\Program Files\Ulead Systems\Ulead Photo Explorer 7.0" automatically if you click "Next". Or you can click "Browse" to locate the disk and folder you prefer.



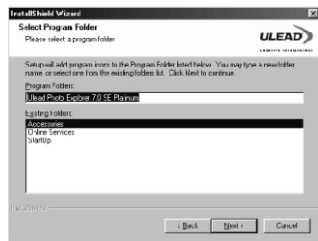
Step 8:

Click "Next" to go to next step.

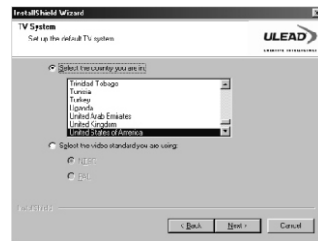


PC Connection

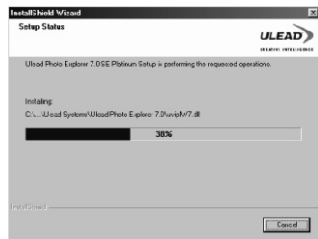
Step 9 :
As a new folder named "Ulead Photo Explorer 7.0 SE Platinum" is generated, click "Next" to go to next step.



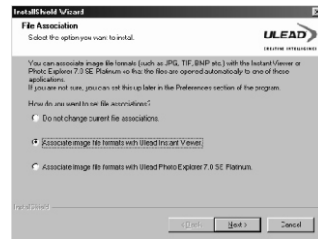
Step 10 :
Set up the default TV system. Please select the country you are in.



Step 11 :
The installation of "Ulead Photo Explorer 7.0 SE Platinum" is starting now. You can click "Cancel" to stop the installation.

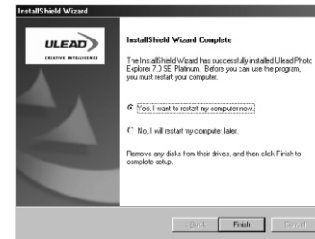


Step 12 :
Select the file association you would like to set and click "Next" to go to next step.



PC Connection

Step 13 :
If the operating system you are using is Windows 98, 98SE or ME, restarting the computer to complete the installation of Ulead Photo Explorer 7.0 SE Platinum is required. Please click "Finish" to complete the installation and restart the computer.



PC Connection

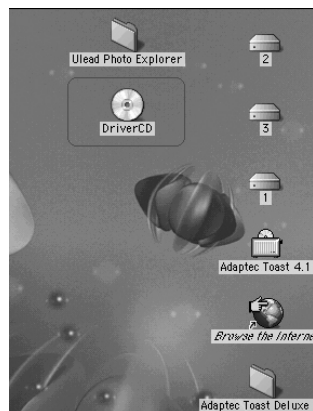
» Under Macintosh Operating System (Mac 9.X or later)

Step 1 :

Turn on the computer.

Step 2 :

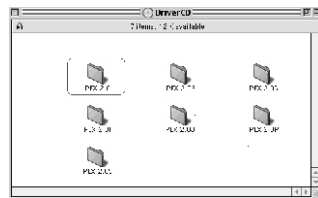
Insert the CD into the CD-ROM Drive. The computer will create an icon named "Driver CD" on the desktop.



Step 3 :

Double clicks on the icon and choose the language you prefer by doubleclicking on one of the below folders.

- PEX 2.0: English
- PEX 2.0F: French
- PEX 2.0G: German
- PEX 2.0I: Italian
- PEX 2.0J: Japanese
- PEX 2.0P: Portuguese
- PEX 2.0S: Spanish



PC Connection

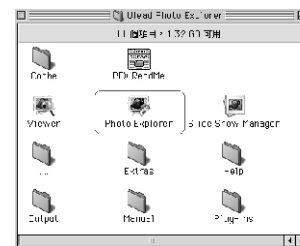
Step 4 :

Choose "Ulead Photo Explorer" and copy this file to the desktop.



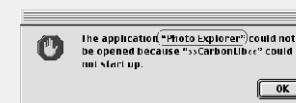
Step 5 :

Click on the newly created "Ulead Photo Explorer" icon on the desktop and double click on "Photo Explorer" folder to start Ulead Photo Explorer.



Note

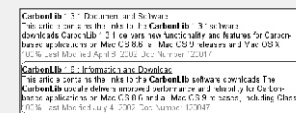
If a warning window shows please visit Apple's official web-site <http://kbase.info.apple.com> to download the latest version of CarbonLib.



- a. Key in "CarbonLib" in the search bar and click "Search" button.



- b. Download the latest version of CarbonLib.



- c. Restart the computer.
d. Go to the desktop and double click on the icon "Ulead Photo Explorer" to start Ulead Photo Explorer.



PC Connection



About Ulead Photo Explorer

Software license

The software described in this document is furnished under a License Agreement which is included with the product. This Agreement specifies the permitted and prohibited uses of the product.

Licenses and trademarks

ICI Library 1991-1992 C-Cube Microsystems. Ulead Systems, Inc. And the Ulead logo are trademarks of Ulead Systems, Inc. All other product names and any registered and unregistered trademarks mentioned in this manual are for identification purposes only and remain the exclusive property of their respective owners.

Technical supports

Registered users are entitled to Ulead technical support. Our Website has valuable up-to-date information about Photo Explorer, other Ulead products, and free downloads. Visit our Web site at www.ulead.com, or send an e-mail at support@ulead.com.tw.

Headquarters:
Ulead Systems, Inc.
<http://www.ulead.com.tw>
E-mail: info@ulead.com.tw

North & South America:
Ulead Systems, Inc.
<http://www.ulead.com>
E-mail: info@ulead.com

Japan:
Ulead Systems, Inc.
<http://www.ulead.co.jp>
E-mail: info@ulead.co.jp

Asia-Pacific:
Ulead System, Inc.
<http://www.asiapac.ulead.com>
E-mail: info@asiapac.ulead.com

Europe:
Ulead Systems GmbH
<http://www.ulead.de>
<http://www.ulead.co.uk>
<http://www.ulead.co.uk/fr>
E-mail: info@ulead.de

China:
Ulead Systems, Inc.
<http://www.ulead.com.cn>
E-mail: info@ulead.com.cn



PC Connection



System requirements

Before installing Photo Explorer, make sure your computer meets these requirements:

- Intel® Pentium® processors (or 100% compatible processors)
- Microsoft Windows® 95/98, NT 4.0, 2000 or higher
- 32 MB RAM (or more)
- 17.8 MB available hard drive space for program files
- True Color or HiColor display adapter and monitor (recommended)
- 800 X 600 minimum display resolution
- Windows compatible pointing device
- Microsoft Internet Explorer 4.0 or higher
- Internet connection (recommended)
- 16-bit or better sound card and speakers (recommended)
- DirectX 6.0 or higher (for video functions only)

PC Connection

The Browser

Just like Windows Explorer, Photo Explorer's Browser shows the hierarchy of drives and folders in your computer at the left hand side and displays the files in a selected folder at the right. What's special about Photo Explorer's Browser is that multimedia files can be shown as visual thumbnails for easier identification. Simply click a desired file to immediately get an idea of the file's contents. You can preview images and actually play sound, video or even GIF animation files without actually opening them. Basic image editing functions are also available for enhancing images. In addition, you can bring together images, videos and sounds to create a slide show.



Photo Explorer's Browser gives you different folder views. In the Folder Tree, you can switch to the Favorites list to create a collection of frequently visited folders. The Browser also keeps track of Recent folders you accessed and lets you return to them quickly.









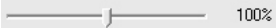











PC Connection

Using the Ulead Photo Explorer Browser:

Area	Icon	Function
Main Toolbar		Open viewer
		Open new viewer
		Back
		Forward
		Rotate left
		Rotate right
		Delete
		Digital camera wizard
		TWAIN acquire
		Slide show
		Auto rename
		Convert
		Print thumbnails
		Print images
		Send to (Email out)
		Drop Spot
		Share on Web
		Display mode change (files detail information big icon)
	Photo properties	
	Help	

165mm+-2

 **PC Connection**

Preview Pane		Zoom in
		Zoom out
		Original size
		Fit to screen
		Rotate left
		Invert
		Rotate right
		Image Properties
		
	Slider of Zoom in/out	
Slide Show Pane	Slide Show: 1 files	
	Number of selected files	
		New
		Open
		Save
		Save As
		Add
		Remove
		Move
		Rotate
		Slide Properties
		Screen Saver
		Export

122mm+-2

 **PC Connection**

		Package
		Create Slide Show Disc
		Stitch Panorama
		Share
		Show
		Slide Show Options
		Close

 **PC Connection**

 **The Viewer**

Photo Explorer has a built-in Viewer integrated with the Browser. You can use the built-in Viewer to:

- Get a full-size or full-screen view of images.
- Navigate through images using the keyboard, toolbar buttons, or menu commands, or let Viewer automatically step through the images.
- Copy, rename or delete an image file.
- Copy an image for pasting onto your desired image editor.
- Rotate, flip and edit images, and then save the changes.
- Create wallpapers and screen savers using your images.



Photo Explorer's built-in Viewer







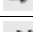







A standalone image viewer, the Ulead Instant Viewer, also comes with Photo Explorer. It is a simpler, independent application and its sole purpose is only for displaying images. Use Ulead Instant Viewer when you want to compare two or more full-size images. Each image will be opened in a separate window. You can also associate file types like JPG, GIF and BMP image files so that they will automatically display in the Ulead Instant Viewer.



Ulead Instant Viewer windows

 **PC Connection**

 **Using the Ulead Photo Explorer Viewer:**

Area	Icon	Function Describe
Main Toolbar		Open Explorer
		Open
		Print Image
		First image
		Previous
		Next
		Last image
		Zoom In
		Zoom Out
		Fit to screen
		Original size
		Auto Advance
		Full Screen
		Properties

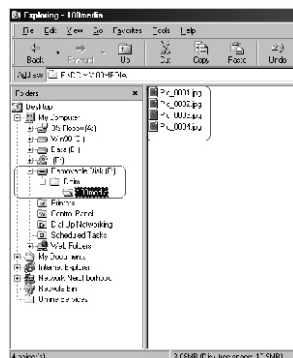
PC Connection

Downloading the Image(s)

Under Windows Operating System (Windows 98/98SE/2000/ME/XP)

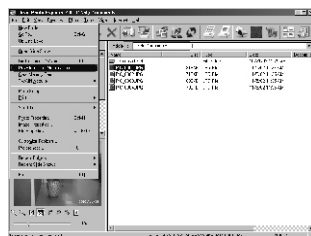
■ Downloading Image(s) From Removable Disk

1. Turn on the PC.
2. Switch on the camera.
3. Connect the camera to the PC with USB cable under any working mode. Please make sure the USB cable is well connected to the PC and camera.
4. When the USB cable is connected to the PC, it will create a new hard disk named Removable Disk.
5. The stored "image(s) can be found in" RemovableDisk\Dcim\100media .
6. View the image with double-clicks.



■ Downloading Image(s) Through Ulead Photo Explorer

1. Connect the camera to the PC with USB cable under any working mode. Please make sure the USB cable is well connected to the PC and camera.
2. Start Ulead Photo Explorer 7.0 SE Platinum .
3. Click "File/Download From Memory Card" to get the stored image(s).



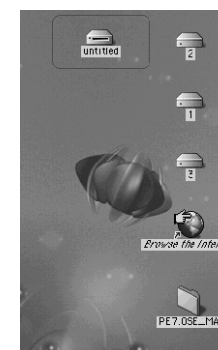
PC Connection

Downloading the Image(s)

Under Macintosh Operating System (Mac 9.X or later)

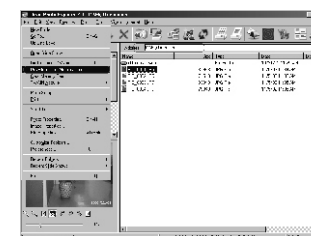
■ Downloading Image(s) From Removable Disk

1. Turn on the PC.
2. Switch on the camera.
3. Connect the camera to the PC with USB cable under any working mode. Please make sure the USB cable is well connected to the PC and camera.
4. When the USB cable is connected to the PC, it will create a new icon named "untitled" on the desktop.
5. Double click on the icon.
6. The stored image(s) can be found in the folder of DCIM \ 100MEDIA\.
7. View the image with double click.



■ Downloading Image(s) Through Ulead Photo Explorer

1. Connect the camera to the PC with USB cable under any working mode. Please make sure the USB cable is well connected to the PC and camera.
2. Start Ulead Photo Explorer 7.0 SE Platinum .
3. Click File/Download From Memory Card to get the stored image(s).

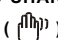




Appendix



Error Message Table

Message	Cause	Solution
CARD FULL	There is insufficient card memory capacity to store an image.	Delete the stored image(s) in the memory card or insert a new memory card.
MEMORY FULL	There is insufficient internal memory capacity to store an image.	Delete the stored image(s) in the flash memory.
CARD LOCKED (CARD ICON is BLINKING)	The SD card is under protection.	Set the card protection switch at non-protection position.
LOCK	The Image can't be deleted under protection.	Unlock the protected image.
NO IMAGE	There is no image stored in the memory card or built-in flash memory.	
FILE ERROR		Delete this image and take the picture again.
MEMORY ERROR		Format the flash memory.
CARD ERROR		Insert a new memory card or format the card
LOW LIGHT!	The environment is too dark in "Flash Off" or [Night Scene] mode.	Set the flash mode at Auto Flash or Fill-in Flash.
HAND SHAKE ICON ()	The environment is too dark in "Flash Off" or [Night Scene] mode.	Set the flash mode at Auto Flash or Fill-in Flash.
LENS COVER	The lens cover is closed.	Please open the lens cover before taking pictures.



Appendix



Specifications

Specifications		
Image Sensor	Type	1/2.7" CCD
	Effective Pixels	Approx. 3.14 Mega pixels
	Total Pixels	Approx. 3.3 Megapixels
Lens	Focal Length	f=5.1mm (35mm film equivalent: 34mm)
	F No.	F2.9 / F8.0
	Digital Zoom	Capture Mode:4x (continuous) & PlayMode:4x (continuous)
LCD Display	1.6" color TFTLCD (80k pixels)	
Viewfinder	Optical Viewfinder	Optical virtual image viewfinder
Focusing	Type	Fixed Focus with two steps manual adjustment
	Range	Macro: 0.2m, Normal: 0.8m-infinity
Shutter	Type	Mechanical shutter and electronic shutter
	Speed	1/4~1/1000 sec. Mechanical shutter 1/1000 sec. Electronic shutter
Exposure	Control	Programmed AE
	Compensation	± 2EV (0.5EV / steps)
	ISO Equivalent	Auto (100-200)
Flash	Modes	Auto / Auto Flash with Red-eye Reduction / Slow sync / Fill-in flash / Flash off
	Range	0.8 ~ 2.5m
	Recharging	Approx.: 10 sec.
White Balance	Auto / Daylight / Fluorescent / Tungsten / Sunset	
Shooting	Still Image	Modes : Single image
	Movie Clip	Size : 320x240 with Audio Recording time : 10~30 sec. (10sec. / steps) and Manual
Self-timer	10 seconds with LED indicator	
Storage	Media	Internal memory: 16MB flash memory External memory: SD Card
	File Format	Still Image: JPEG EXIF, DCF, DPOF Movie Clip: AVI with wave sound
	Image Size	Extra Large : 2560x1920 via interpolation , large: 2048x1536 pixels, Medium: 1600x1200 pixels, Small: 1280x960 pixels
Image Play	Single image / AVI play / Thumbnails / Slide show	
Interface	Digital output connector : USB 1.1	
	DC power input connector : 3.3V / 2.0A	
Power Source	2 pcs of AA alkaline / 2 pcs of Ni-MH AC adapter (Optional)	
Dimensions (WxHxD)	94 x 66 x 41 mm	
Weight	140g	
Software	Camera Driver	Mass Storage Driver (Windows98/98SE/2000/ME/XP, Mac OS 9.2 or later)
	Application	Ulead PhotoExplorer 7/ PhotoExplorer 2 (MAC version)

165mm+-2



Appendix

System Requirments

For Windows	CPU: better than MMXPentium 233MHz (XP : PentiumII 300MHz) Windows 98/98SE/2000/ME/XP Minimum 32MB RAM(XP: 128MB) 110MB of available hard-disk space USB port, CD-ROM drive 800x600 pixels, 16-bit color display compatible monitor (24-bit color display recommended)
For Macintosh	Power Mac G3 or later Mac OS 9.X or later Minimum 64MB RAM 110MB of available hard-disk space USB port, CD-ROM drive QuickTime 4.0 or later for Movie Clip

122mm+-2



MEMO

